



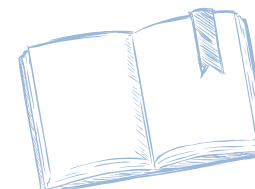
Recognised globally for outstanding education



IRONSIDE STATE SCHOOL STRATEGIC PLAN 2017-2020



IRONSIDE STATE SCHOOL
2 Hawken Drive, St Lucia Qld 4067
Phone 3258 3111 Fax 3257 3100
the.principal@ironsidess.eq.edu.au
www.ironsidess.eq.edu.au



www.ironsidess.eq.edu.au

VISION AND VALUES

Ironside State School – Recognised globally for outstanding education. Inspiring our students to make a difference locally and worldwide.

Our motto is 'Servabo Fidem'

I will be trustworthy
I will keep faith in humanity
I will be honourable
I will not give up faith



As a school community we value:

- Respect and Fairness
- Honesty and Resilience
- Diversity and Inclusivity
- Care and Compassion
- Innovation and Creativity

PRIORITIES FOR 2017-2020



1 Academic Achievement

To assure the academic performance and reputation of Ironside State School.



BELIEFS

- That every child can reach their full potential and leave Ironside prepared for future learning.
- Evidence is crucial to inform, guide and support development and improvement.
- Students demonstrate academic performance in ways not limited to standardised testing.
- High quality resourcing is required to support and partner teaching and learning.

KEY STRATEGIES 2017-2020

- Advance the intellectual rigor of the curriculum as it impacts on each and every child.
- Invest in all stakeholders' capacity to deliver a responsive and modern curriculum, identified as best practice.
- Ensure consistency of curriculum and pedagogical policies and procedures across all school and community audiences.
- Provide students varied opportunities to demonstrate academic achievement.

MEASURES

- Clear improvement in the alignment of NAPLAN measures against A-E data.
- Maintain and improve NAPLAN performance to close the ICSEA v. Achievement gap.
- Extra-curricular activities are part of a coherent strategy to support and add value to academic achievement.

2 Community Engagement

Strengthen the Ironside connection within the local, national and international community.



BELIEFS

- That maximising engagement with our culturally diverse community is a key to school improvement.
- Our school will be developed and enhanced through strategic partnerships with community stakeholders.
- Connection to the local St. Lucia community is strong and to be preserved.
- Parents must be a learning partner in the education of their child.

KEY STRATEGIES 2017-2020

- Embed the ethos of all school activities reflecting the large and culturally diverse nature of its community.
- Exploration and development of networks and partnerships throughout the wider community.
- Grow community perception of the integral role Ironside State School plays in advancing the educational agenda nationally and internationally.

MEASURES

- Volunteers and community experts embedded in curriculum delivery.
- Increased number of volunteers across key school areas.
- Feedback is openly provided with strong return rates.
- High levels of satisfaction with school communications.
- Creation of the Ironside Alumni.

3 The Arts

Continue our tradition of excellence in the arts.



BELIEFS

- Culture is an essential part of a child's education.
- Cultural development contributes to the child's overall wellbeing.
- A multi-modal approach is vital to extend the arts to as many Ironside students as possible.

KEY STRATEGIES 2017-2020

- Continued implementation of the arts as a highly valued component of the school curriculum.
- Exploration of other modes and opportunities for deeper involvement in the arts.

MEASURES

- An expanded arts offering for Ironside students.
- Increased proportion of students participating in the arts.

4 Sport

Increase the value placed on sporting participation and achievement.



BELIEFS

- Healthy children learn better.
- Physical activity is an essential part of learning and education.
- Sport is a key component to the development of the whole child.

KEY STRATEGIES 2017-2020

- Prioritise the identification of talent in sports for which students display capacity, combined with processes to support a clear pathway to high level representation.
- Develop clear school processes and practices to support identified students pathways to higher representation
- Establish protocols for the recognition of talented students to mirror the ethos of academia and the arts.

MEASURES

- Increased student numbers at higher level representation.
- Increased organised sporting opportunities for lower primary students.
- Sportsmanship regularly recognised and acknowledged.
- Improved sporting facilities across the campus.